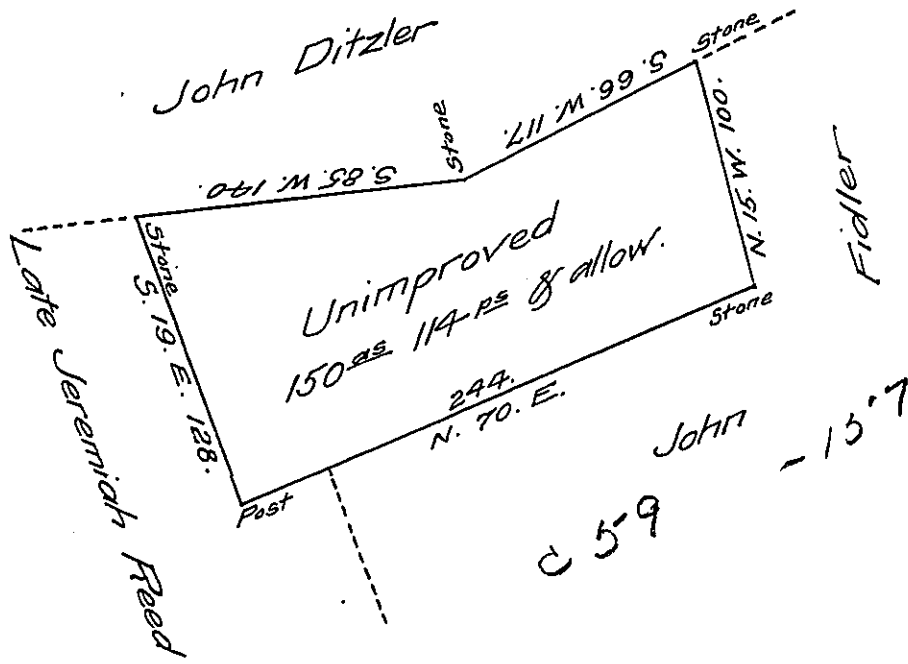


A-28 191



Situate in Barry township Schuylkill county containing one hundred and fifty acres and one hundred and fourteen perches and the allowance of six per cent Surveyed on the 16th day of December 1829 in pursuance of a warrant dated the 17th day of July 1829 granted to George Shartle

AUGUST 19th 1830.

To Jacob Spangler Esquire }
 Surveyor General of Penn^a }

W. Jackson D.S.

IN TESTIMONY that the above is a copy of the original remaining on file in the Department of Internal Affairs of Pennsylvania, made conformably to an Act of Assembly approved the 16th day of February, 1833, I have hereunto set my Hand and caused the Seal of said Department to be affixed at Harrisburg, this twenty fourth day of February 1908.

Henry Hoover
 Secretary of Internal Affairs.